

Atec Cast Iron Penstock Valves

Cast Iron Penstock Valves provide a robust and quality flow control solution for water, wastewater, and sewage applications.



TECHNICAL GUIDE: **AVH1.4**

Applications

Where flow control is required

Water, waste and sewage applications

Product Attributes

Robust and sturdy construction

Various sizes available

Approvals/Standards

All components used in the manufacture by Industrial Penstock are in accordance with their relevant British Standards

Quality

ISO 9001:2008 Quality Management Standard

Cast Iron Penstock Valves provide a robust and quality flow control solution for water, wastewater, and sewage applications.

- Wall mounting on-seat Penstock valves can be used in water, waste and sewage applications.
- The Cast Iron body provides a strong and durable structure for effective flow control.
- The seals on a Penstock valve are specially designed to give the best degree of water tightness, assuming the unit is installed correctly.
- DO NOT use excessive force when opening or closing a Penstock door, as damage could occur.
- Available in a range of sizes from 150 – 900 mm.
- The Penstock valve is fixed to the wall by means of expanding or resin type anchor bolts, and sealed with grout.
- Dolly cap as standard. Handwheel and extension spindles available on request.
- Installation and operation manuals available on request.

TABLE 2 Penstocks Material Standards

Mild Steel	BS4360 Gr 42A
Stainless Steel	BS970 Gr 304 / 316
Cast Iron	BS1452 Gr 220
Mild & Galv Steel	BS729
Mild Steel	BS4360 43A
Ductile Iron	ISO 1083 BSEN 1563

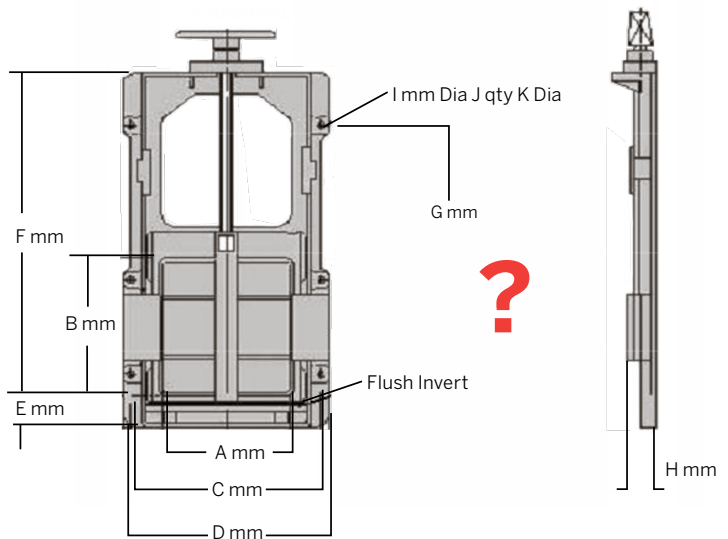


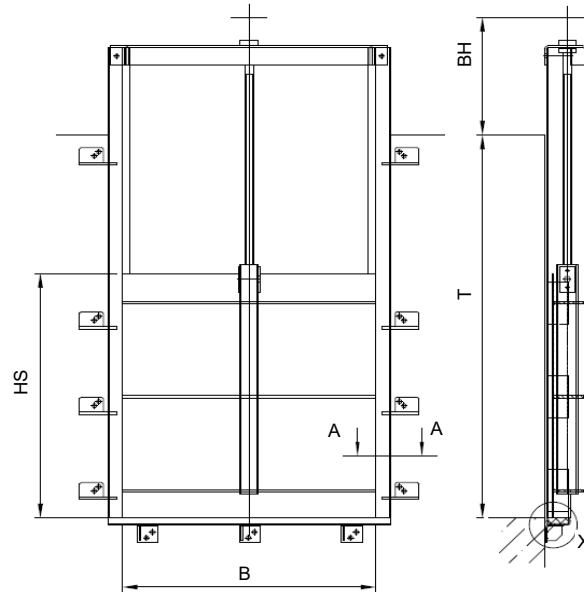
TABLE 1 Cast Iron Penstock Wall Mount

Product Code	Description	Dimensions							Bolt Dimensions			Weight (kg)
		A-B	C	D	E	F	G	H	I	J	K	
VPENCI0150	6m on Seat 3m off 150mm	150	300	345	55	399	365	115	15	6	12	22
VPENCI0250	6m on Seat 3m off 250mm	250	400	445	55	629	649	54	15	6	12	43
VPENCI0300	6m on Seat 3m off 300mm	300	450	495	55	729	694	54	15	6	12	54
VPENCI0400	6m on Seat 3m off 400mm	400	565	619	75	953	995	130	15	6	12	78
VPENCI0450	6m on Seat 3m off 450mm	450	615	670	75	1055	1085	130	15	8	12	110
VPENCI0600	6m on Seat 3m off 600mm	600	765	820	75	1355	1390	140	15	8	12	149
VPENCI0900	6m on Seat 3m off 900mm	900	1070	1135	100	1995	1510	-	15	12	12	-

Channel Penstock Compatec

- Up to DN 1200 and 6 mwc (0,6 bar)
- Innovative frame profile
- Maintenance-friendly sealing system
- Available as blocking- and regulation
- valve
- Low-wear door guidance
- Multifaceted installation option

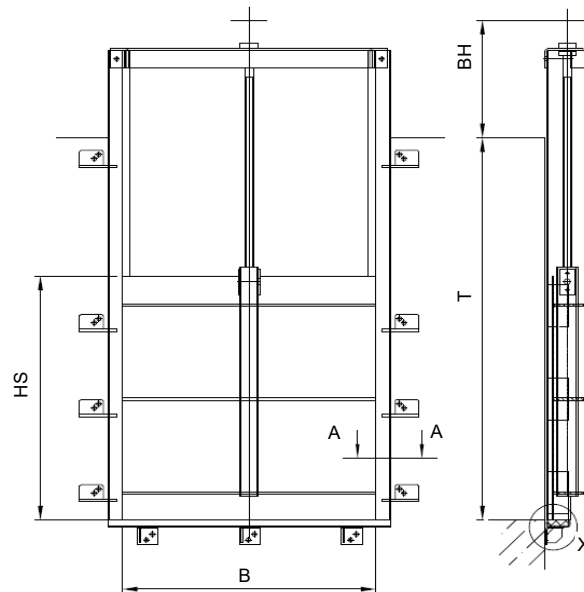
ATEC CHANNEL PENSTOCK COMPATEC for anchor bolting with straight sill for anchor bolting



Channel Penstock Unitec

- Up to DN 2000 and 6 mwc (0,6 bar)
- Tough edge profile for special applications as well as frame heating
- Maintenance-friendly sealing system
-
- Available as blocking- and regulation
- valve
- Low-wear door guidance

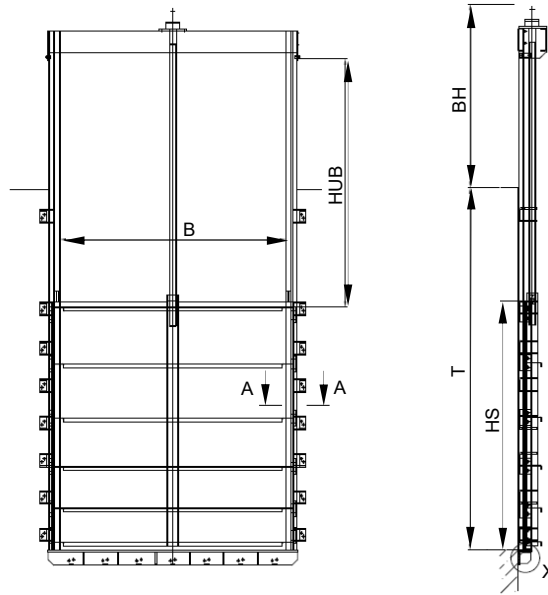
ATEC CHANNEL PENSTOCK UNITEC for anchor bolting with straight sill for anchor bolting



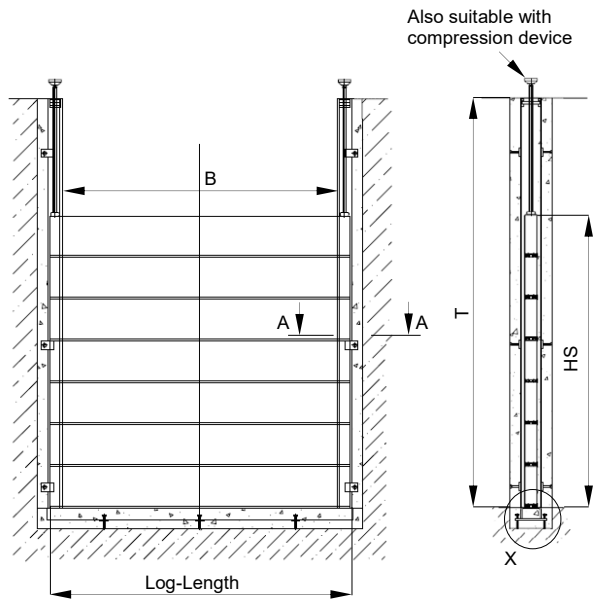
Channel Penstock Multitec

- Nominal diameters up to the highest dimensions and up to 30 mwc (3 bar)
- Heavy tread edge profile
- Maintenance-friendly through bolted sealing system
- Available as blocking- and regulation valve
- Low-wear door guidance

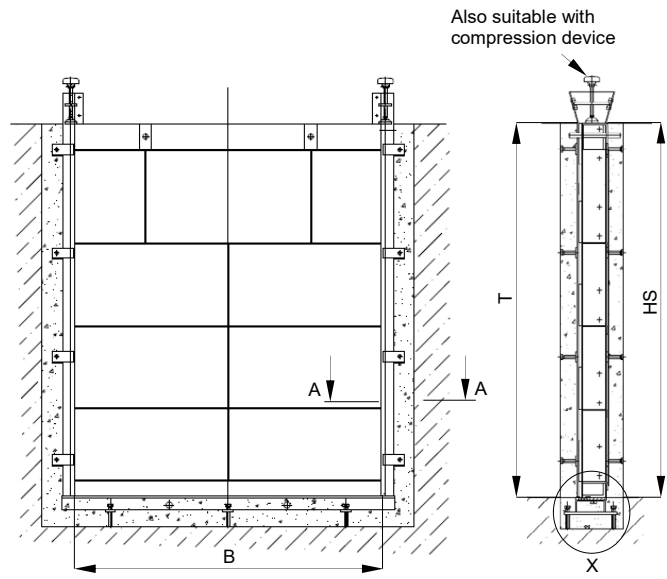
ATEC CHANNEL PENSTOCK MULTITEC for anchor bolting with straight sill



Stoplog DBTEC



Stoplog Damboard DPTEC





Scan for more information

Disclaimer: While every effort has been made to ensure that the information in this document is correct and accurate, users of Hygrade Water Infrastructure product or information within this document must make their own assessment of suitability for their particular application. Product dimensions are nominal only, and should be verified if critical to a particular installation. No warranty is either expressed, implied, or statutory made by Hygrade Water Infrastructure unless expressly stated in any sale and purchase agreement entered into between Hygrade Water Infrastructure and the user.

November 2021

+61 7 38059186
hygradewater.com.au

BRISBANE (Head Office)
42-44 Blue Eagle Drive
Meadowbrook, QLD 4131

SYDNEY
10 McPherson Road
Smeaton Grange, NSW 2567

HW **HYGRADE WATER**
INFRASTRUCTURE