

# PRODUCT PROFILE

## RECYFIX® Plus 100



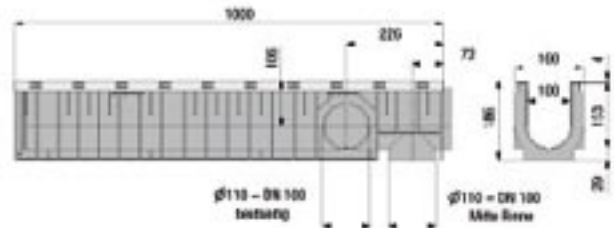
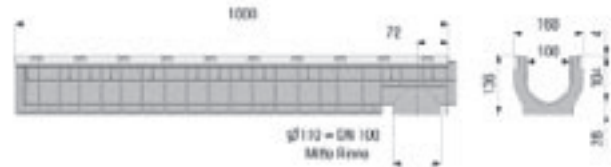
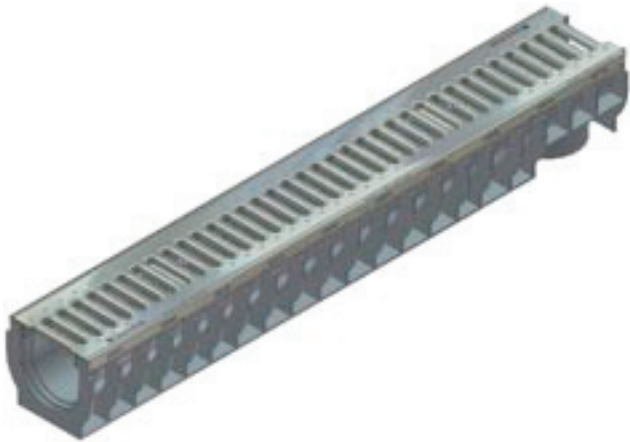
	Length mm	Width mm	Height mm	Drainage cross- sect. cm <sup>2</sup>	Intake cross- sect. cm <sup>2</sup> /m	Weight kg	Article No. galvanised angle housing	Article No. stainless steel angle housing
Type 60 with slotted grating SW 75/9, locked*	1000	147	60	25	280	4,0	40332	41404
Type 80 with slotted grating SW 75/9, locked*	1000	147	80	45	280	4,1	40337	41406
Type 60 with mesh grating MW 30/10, locked*	1000	147	60	25	650	5,2	40333	41414
Type 80 with mesh grating MW 30/10, locked*	1000	147	80	45	650	5,3	40338	41416
Type 60 with perforated grating, stainless steel, locked*	1000	147	60	-	-	3,9	-	41444
Type 80 with perforated grating, stainless steel, locked*	1000	147	80	-	-	4,1	-	41446

Versions with galvanised or stainless steel perforated gratings on request.

\* For common frequented areas we recommend FASERFIX SUPER KS channels, flat (catalogue CIVILS).

The quality of the stainless steel material is according CNS 1.4301.

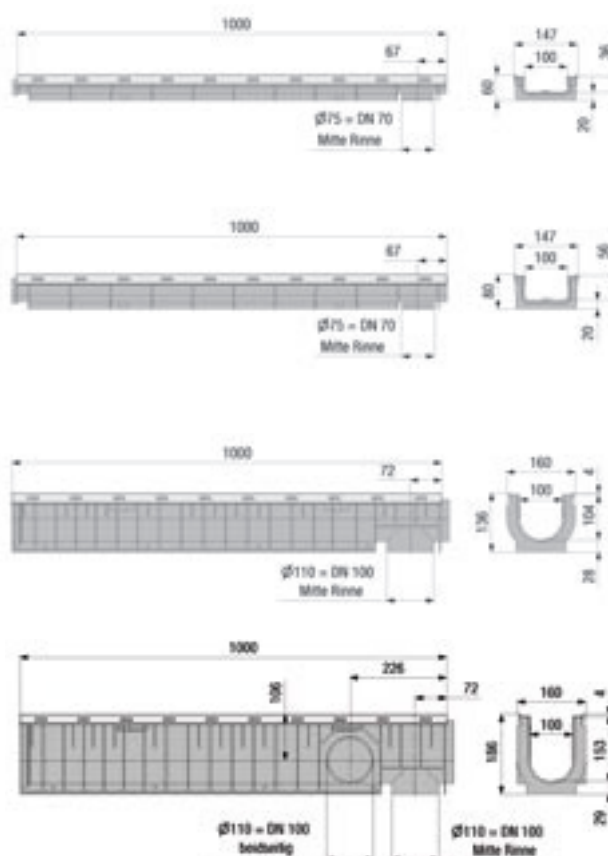
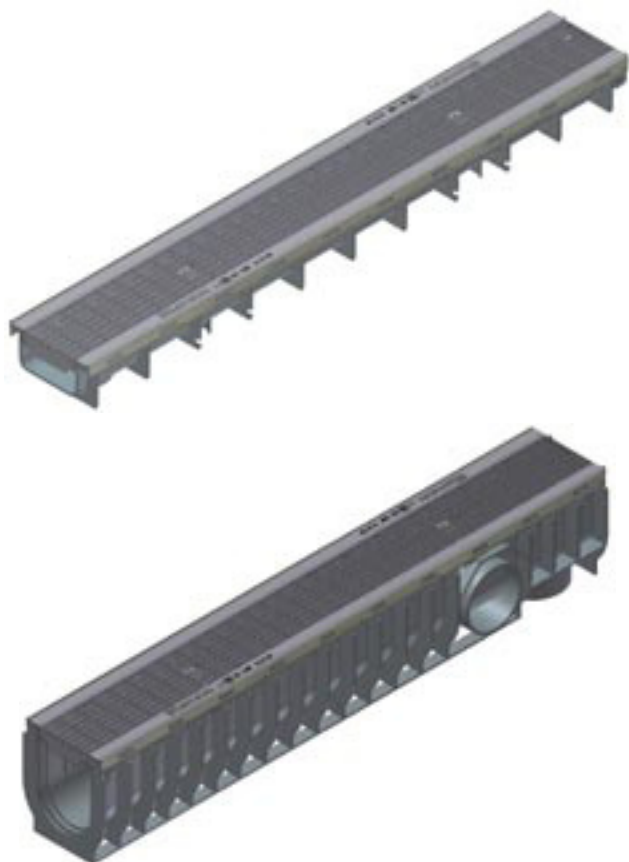
# RECYFIX® Plus 100



	Length mm	Width mm	Height mm	Drainage cross- sect. cm <sup>2</sup>	Intake cross- sect. cm <sup>2</sup> /m	Weight kg	Article No. galvanised angle housing	Article No. stainless steel angle housing
Type 01 with slotted grating SW 75/9, locked	1000	160	135	92	280	5,3	40344	41400
Type 0105 with slotted grating SW 75/9, locked	500	160	135	92	280	2,8	40347	41407
Type 010 with slotted grating SW 75/9, locked	1000	160	185	142	280	6,3	40339	41402
Type 01005 with slotted grating SW 75/9, locked	500	160	185	142	280	3,2	40341	41408
Type 01 with mesh grating MW 30/10, locked	1000	160	135	92	650	6,5	40346	41410
Type 0105 with mesh grating MW 30/10, locked	500	160	135	92	650	3,4	40348	41417
Type 010 with mesh grating MW 30/10, locked	1000	160	185	142	650	7,5	40340	41412
Type 01005 with mesh grating MW 30/10, locked	500	160	185	142	650	3,8	40343	41418
Type 01 with perforated grating, stainless steel, locked	1000	160	135	92	-	5,5	-	41440
Type 010 with perforated grating, stainless steel, locked	1000	160	185	-	-	6,4	-	41442
Type 0105 with perforated grating, stainless steel, locked	500	160	135	92	-	2,8	-	41447
Type 01005 with perforated grating, stainless steel, locked	500	160	185	142	-	3,2	-	41448

Versions with galvanised or stainless steel perforated gratings on request.  
The quality of the stainless steel material is according CNS 1.4301.

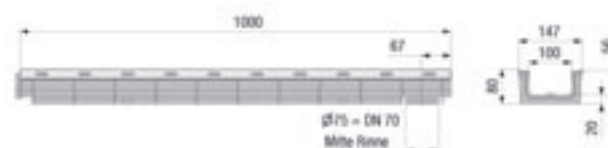
# RECYFIX® Plus 100



	Length mm	Width mm	Height mm	Drainage cross- sect. cm <sup>2</sup>	Intake cross- sect. cm <sup>2</sup> /m	Weight kg	Article No.
Type 60 with mesh grating MW 30/10, galvanised, locked*	1000	147	60	25	650	6,0	41424
Type 80 with mesh grating MW 30/10, galvanised, locked*	1000	147	80	45	650	6,2	41426
Type 01 with mesh grating MW 30/10, galvanised, locked	1000	160	135	92	650	7,5	41420
Type 0105 with mesh grating MW 30/10, galvanised, locked	500	160	135	92	650	4,0	41427
Type 010 with mesh grating MW 30/10, galvanised, locked	1000	160	185	142	650	8,5	41422
Type 01005 with mesh grating MW 30/10, galvanised, locked	500	160	185	142	650	4,4	41428

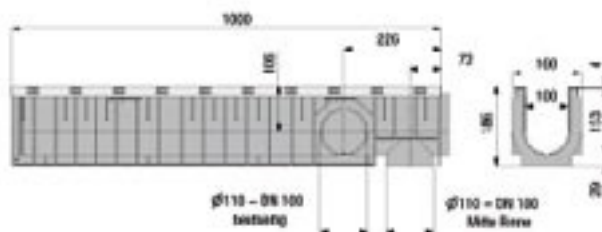
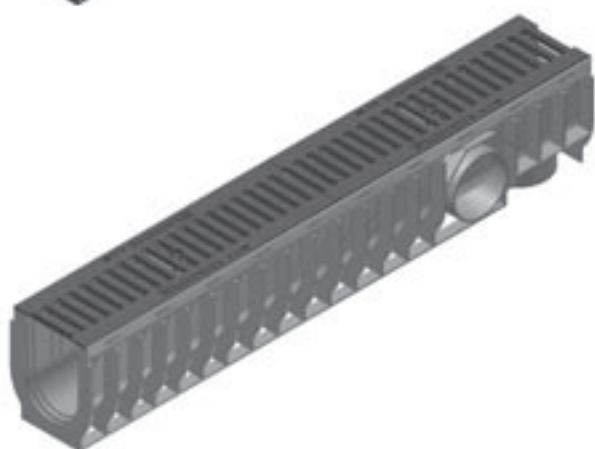
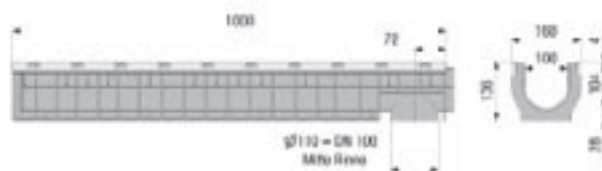
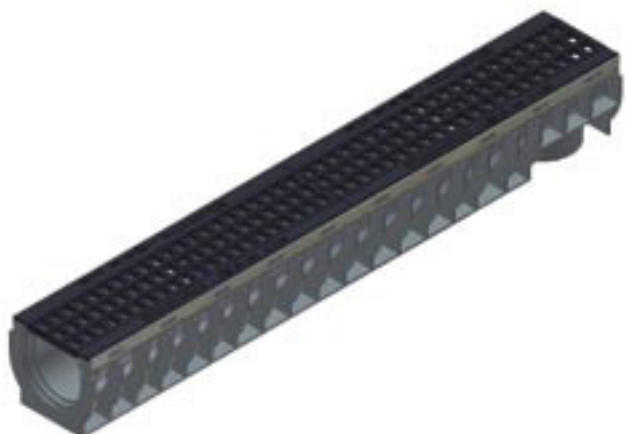
\* For common frequented areas we recommend FASERFIX SUPER KS channels, flat (catalogue CIVILS).

# RECYFIX® Plus 100



	Length mm	Width mm	Height mm	Drainage cross- sect. cm <sup>2</sup>	Intake cross- sect. cm <sup>2</sup> /m	Weight kg	Article No.
Type 60 with GUGI-Ductile iron mesh grating MW 20/30, black, locked*	500	147	60	25	444	7,4	40359
Type 80 with GUGI-Ductile iron mesh grating MW 20/30, black, locked*	1000	147	80	45	444	7,4	40364
Type 60 with ductile iron grating SW 80/14, black, locked*	1000	147	60	25	450	7,8	40362
Type 60 with ductile iron grating SW 80/6, black, locked*	1000	147	60	25	290	8,6	40372
Type 80 with ductile iron grating SW 80/14, black, locked*	1000	147	80	45	450	8,0	40367
Type 80 with ductile iron grating SW 80/6, black, locked*	1000	147	80	45	290	8,8	40377

# RECYFIX® Plus 100



	Length mm	Width mm	Height mm	Drainage cross- sect. cm <sup>2</sup>	Intake cross- sect. cm <sup>2</sup> /m	Weight kg	Article No.
Type 01 with GUGI-Ductile iron mesh grating MW 20/30, black, locked	1000	160	135	92	444	8,6	40360
Type 0105 with GUGI-Ductile iron mesh grating MW 20/30, black, locked	500	160	135	92	444	7,4	40365
Type 010 with GUGI-Ductile iron mesh grating MW 20/30, black, locked	1000	160	185	142	444	9,5	40380
Type 0105 with GUGI-Ductile iron mesh grating MW 20/30, black, locked	500	160	185	142	444	7,8	40385
Type 01 with ductile iron grating SW 80/14, locked	1000	160	135	92	450	9,0	40361
Type 01 with ductile iron grating SW 80/6, locked	1000	160	135	92	290	10,0	40363
Type 0105 with ductile iron grating SW 80/14, locked	500	160	135	92	450	7,6	40366
Type 0105 with ductile iron grating SW 80/6, locked	500	160	135	92	290	8,1	40368
Type 010 with ductile iron grating SW 80/14, locked	1000	160	185	142	450	9,9	40381
Type 010 with ductile iron grating SW 80/6, locked	1000	160	185	142	290	10,9	40383
Type 0105 with ductile iron grating SW 80/14, locked	500	160	185	142	450	8,0	40386
Type 0105 with ductile iron grating SW 80/6, locked	500	160	185	142	290	8,5	40388

\* For common frequented areas we recommend FASERFIX SUPER KS channels, flat (catalogue CIVILS).